

EUREKA CAL. 29

NO EXPOSURE
LOW MARSH LAND

KOSTER
NOT OPENED

1128
29

21
70'

504

COTTRELL'S MOULDING MILL.
NO WATCHMAN-POWER SYSTEM-FUEL OIL-BURNING & WOOD LIGHTS-ELEC. CITY WATER.

CEDAR

BROADWAY

WHIPPLE

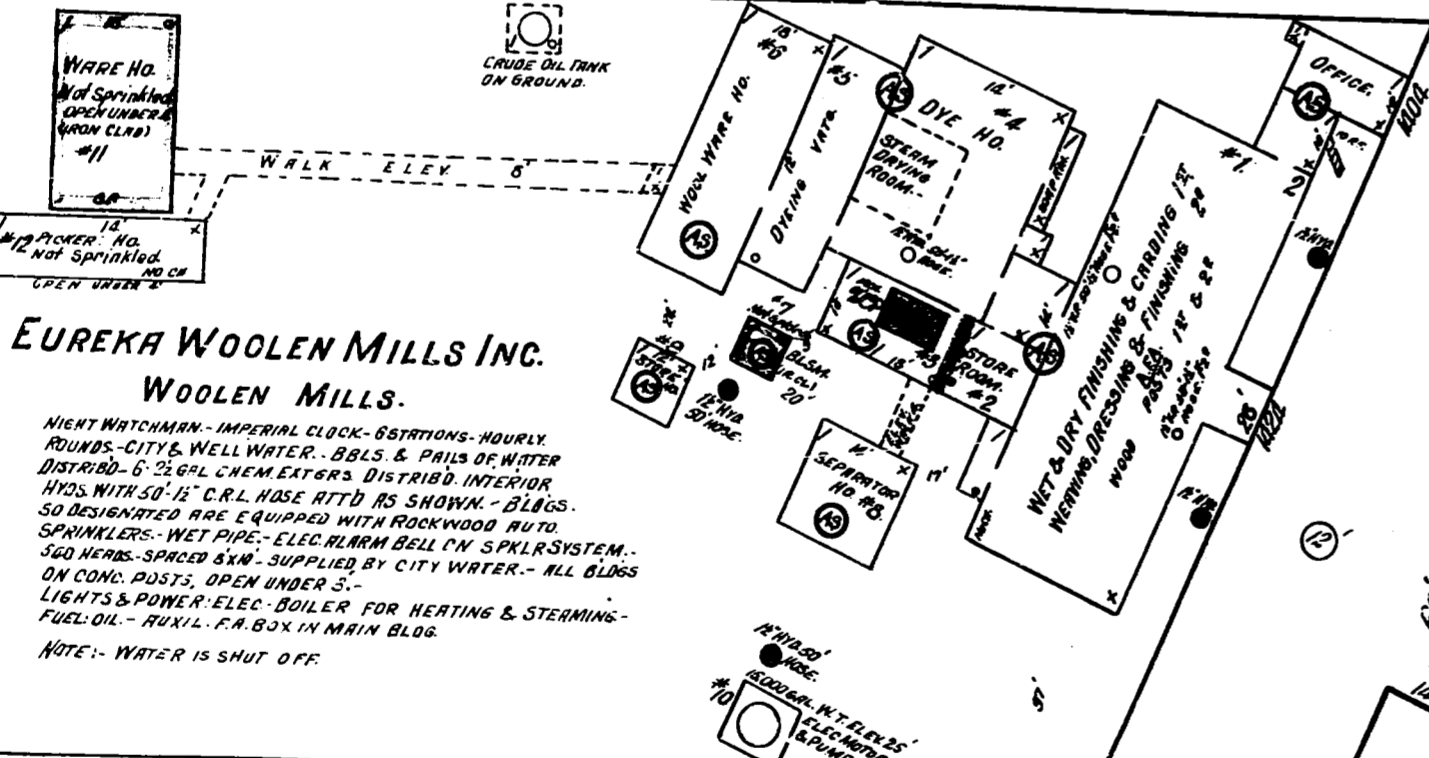
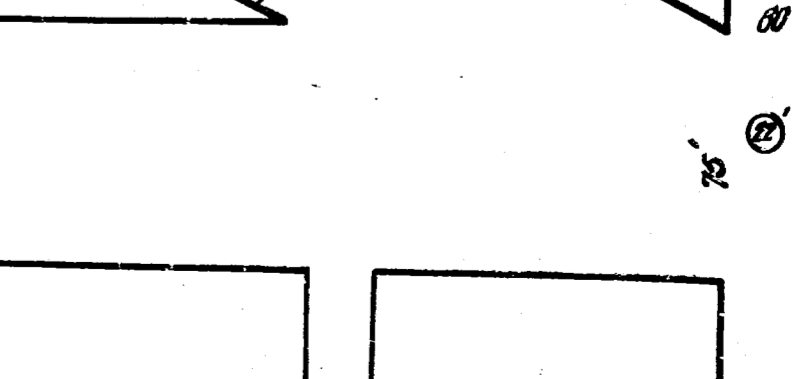
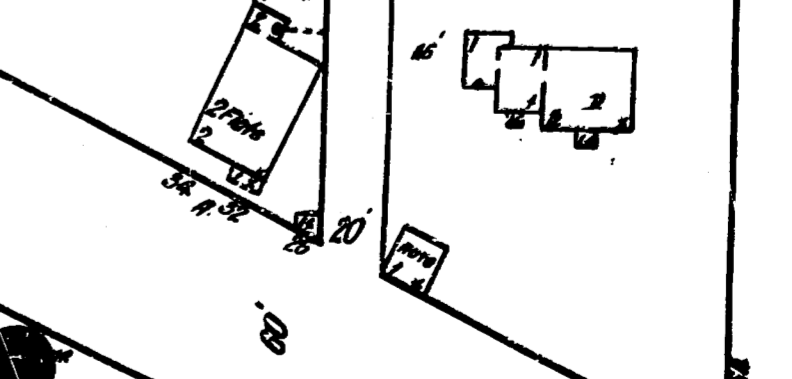
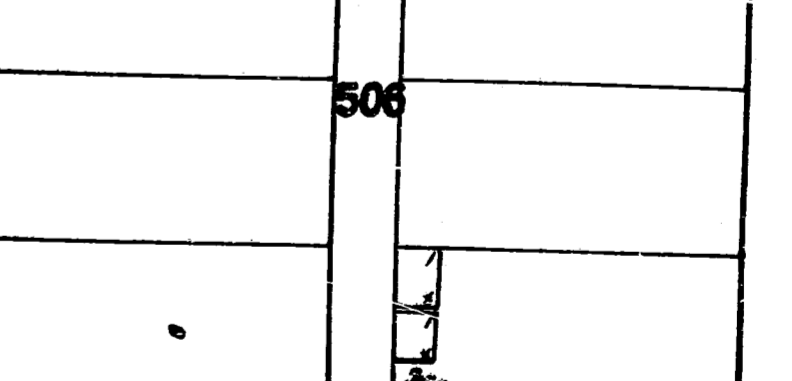
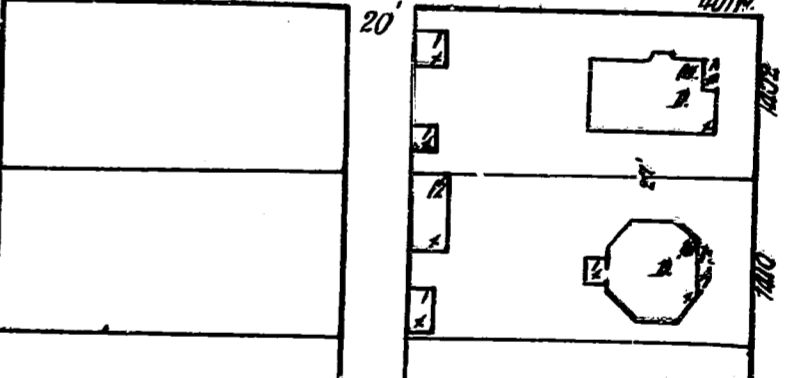
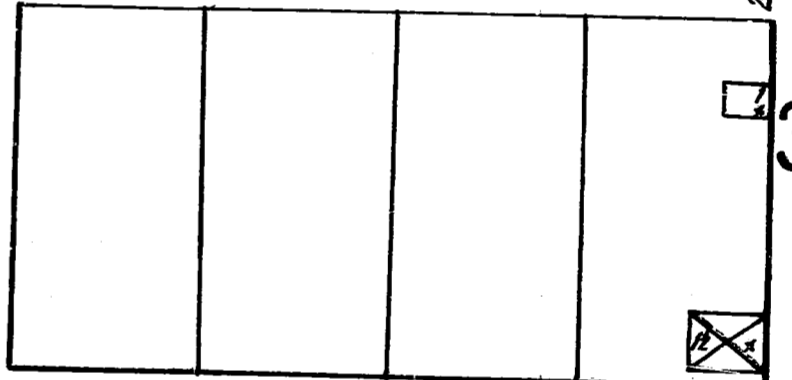
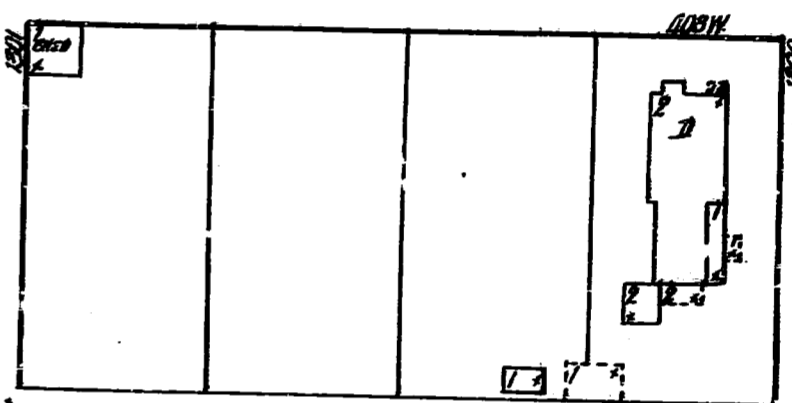
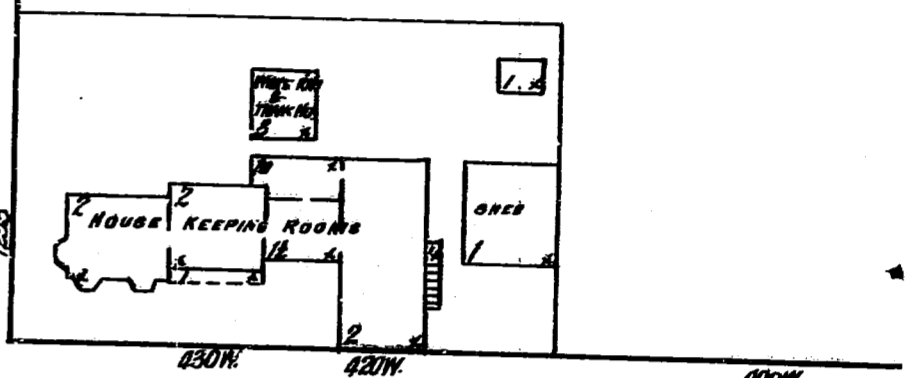
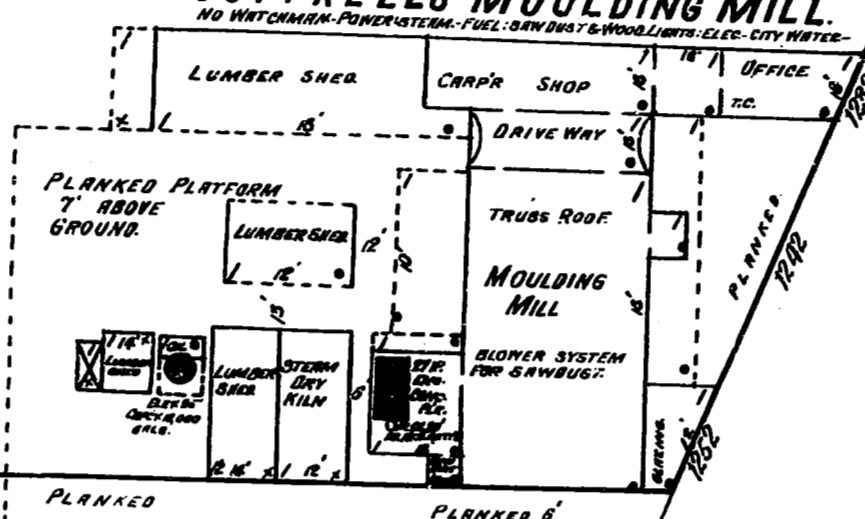
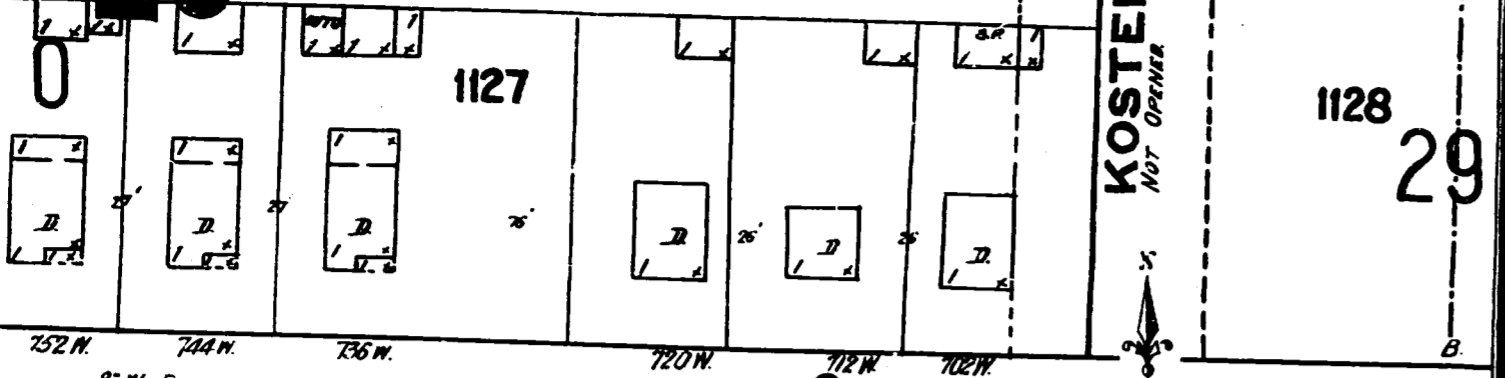
ALBEE

UNION

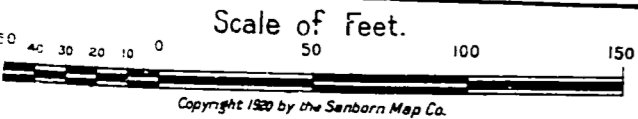
PACIFIC AV.

VINE

31



EUREKA WOOLEN MILLS INC.
WOOLEN MILLS.
NIGHT WATCHMAN-IMPERIAL CLOCK-85ATIONS-HOURLY
ROUNDS-CITY WELL WATER-BOLTS & PIPES OF WATER
DISTRIB-5 1/2 GAL. CHEM EXTERS. DISTRIB. INTERIOR
HIDS WITH 50'-1/2" C.R.L. HOSE ATT'D AS SHOWN-BLAGS
SO DESIGNATED ARE EQUIPPED WITH ROCKWOOD AUTO
SPRINKLERS-WET PIPE-ELEC. ALARM BELL IN SPKLR SYSTEM-
500 FEET-SPACED 5'x5'-SUPPLIED BY CITY WATER-ALL BLDGS
ON CONC. POSTS, OPEN UNDER 3'-
LIGHTS & POWER-ELEC. BOILER FOR HEATING & STERMING-
FUEL OIL-AUXIL. P.M. BOX IN MAIN BLDG.
NOTE: WATER IS SHUT OFF



Copyright 1900 by the Sanborn Map Co.